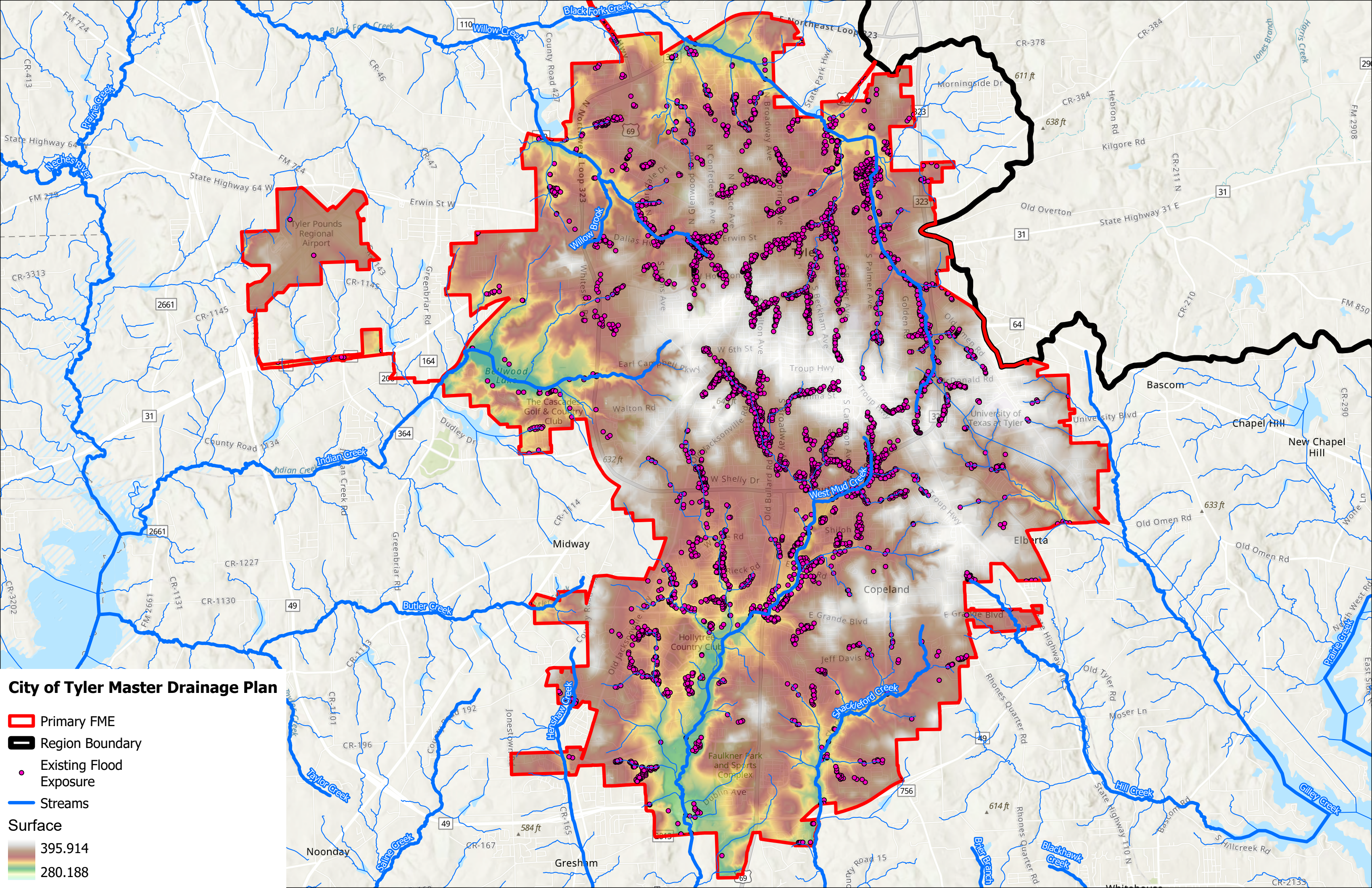


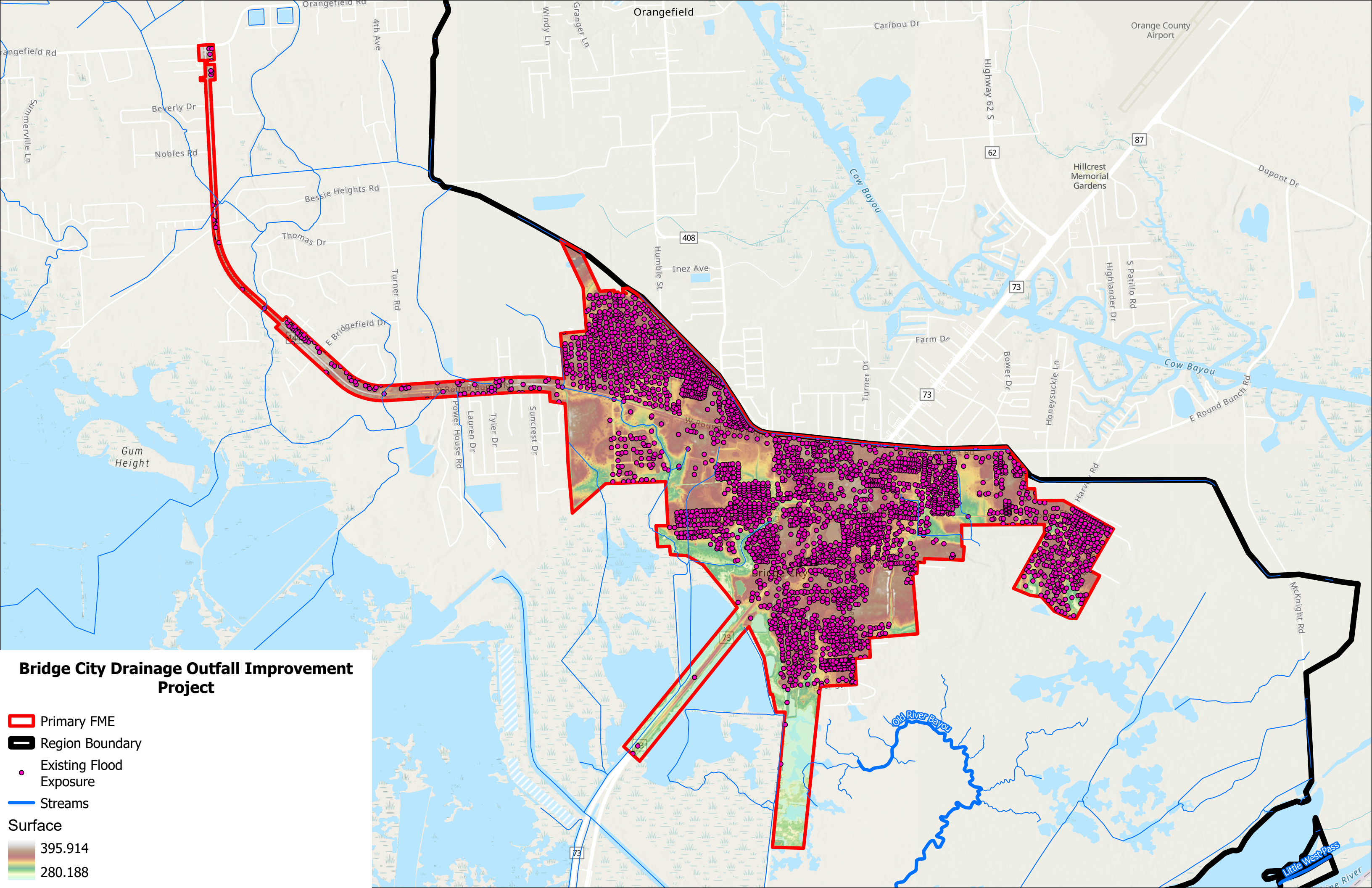
### Hardin County SE Area Drainage System

- ▬ Primary FME
- ▬ Region Boundary
- Existing Flood Exposure
- Streams
- Surface**
- 395.914
- 280.188









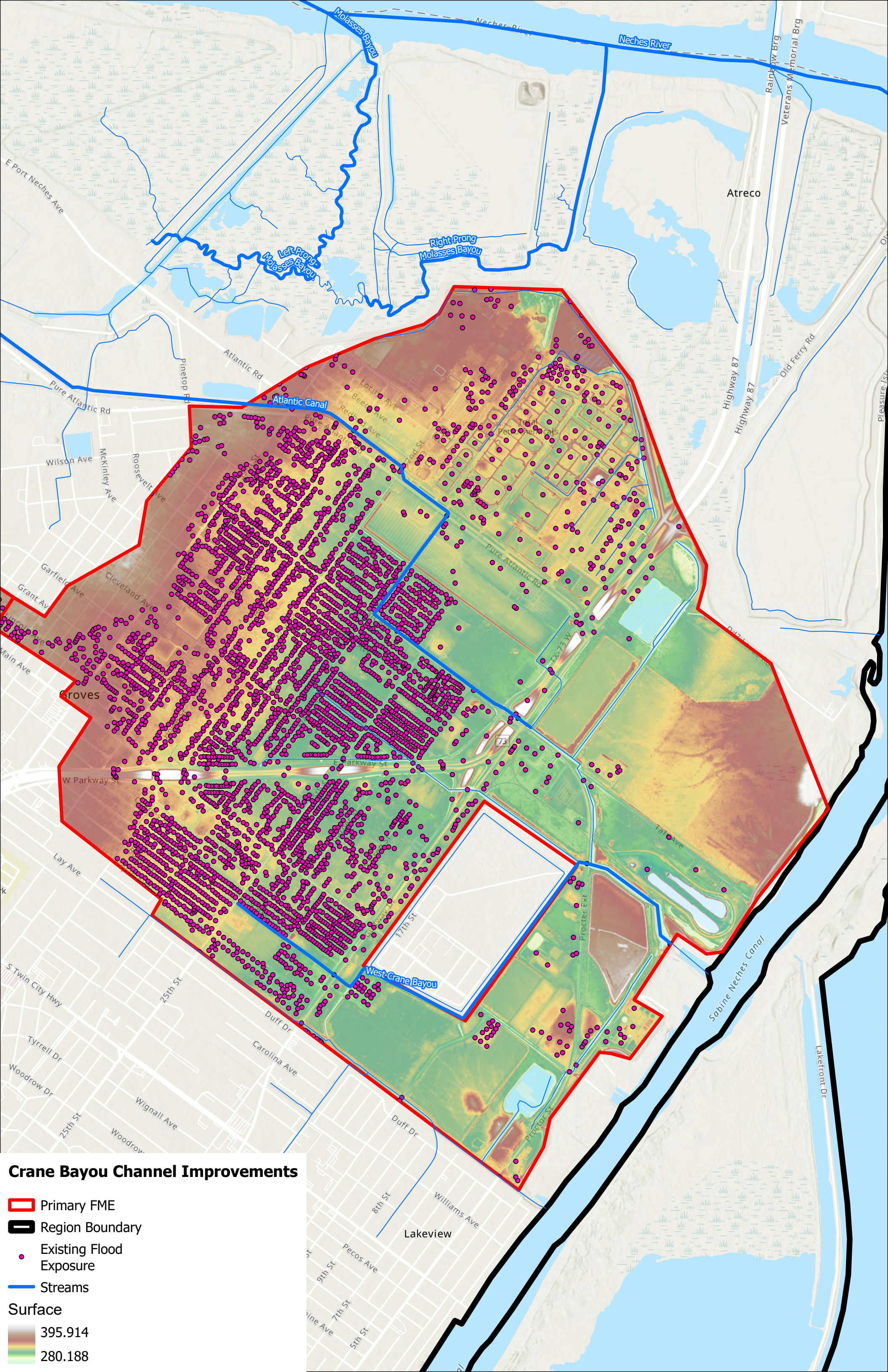
### City of Tyler Master Drainage Plan

- ▭ Primary FME
- Region Boundary
- Existing Flood Exposure
- Streams
- Surface**
- 395.914
- 280.188



### Bridge City Drainage Outfall Improvement Project

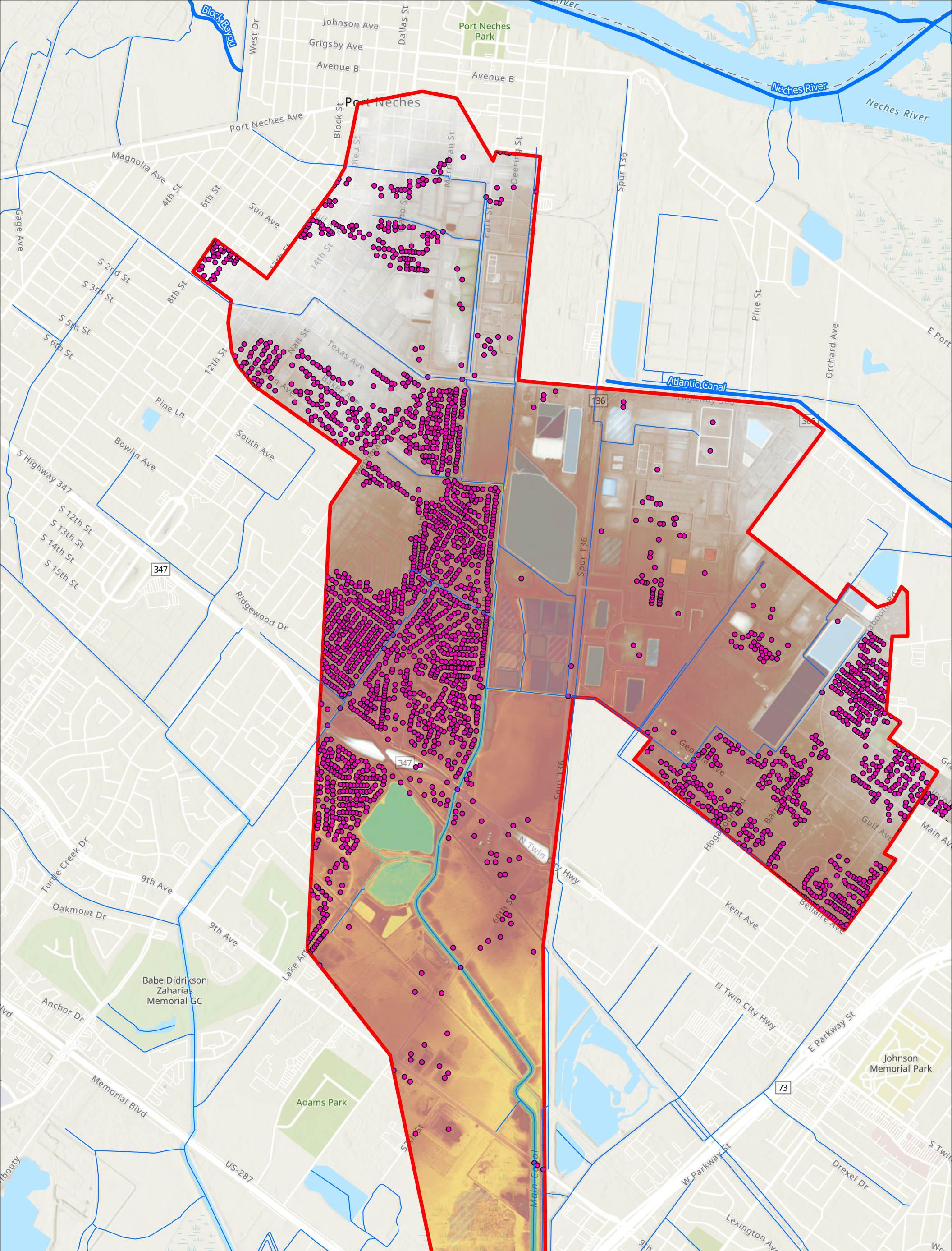
-  Primary FME
-  Region Boundary
-  Existing Flood Exposure
-  Streams
- Surface**
-  395.914
-  280.188



### Crane Bayou Channel Improvements

- ▭ Primary FME
- Region Boundary
- Existing Flood Exposure
- Streams

**Surface**  
 395.914  
 280.188

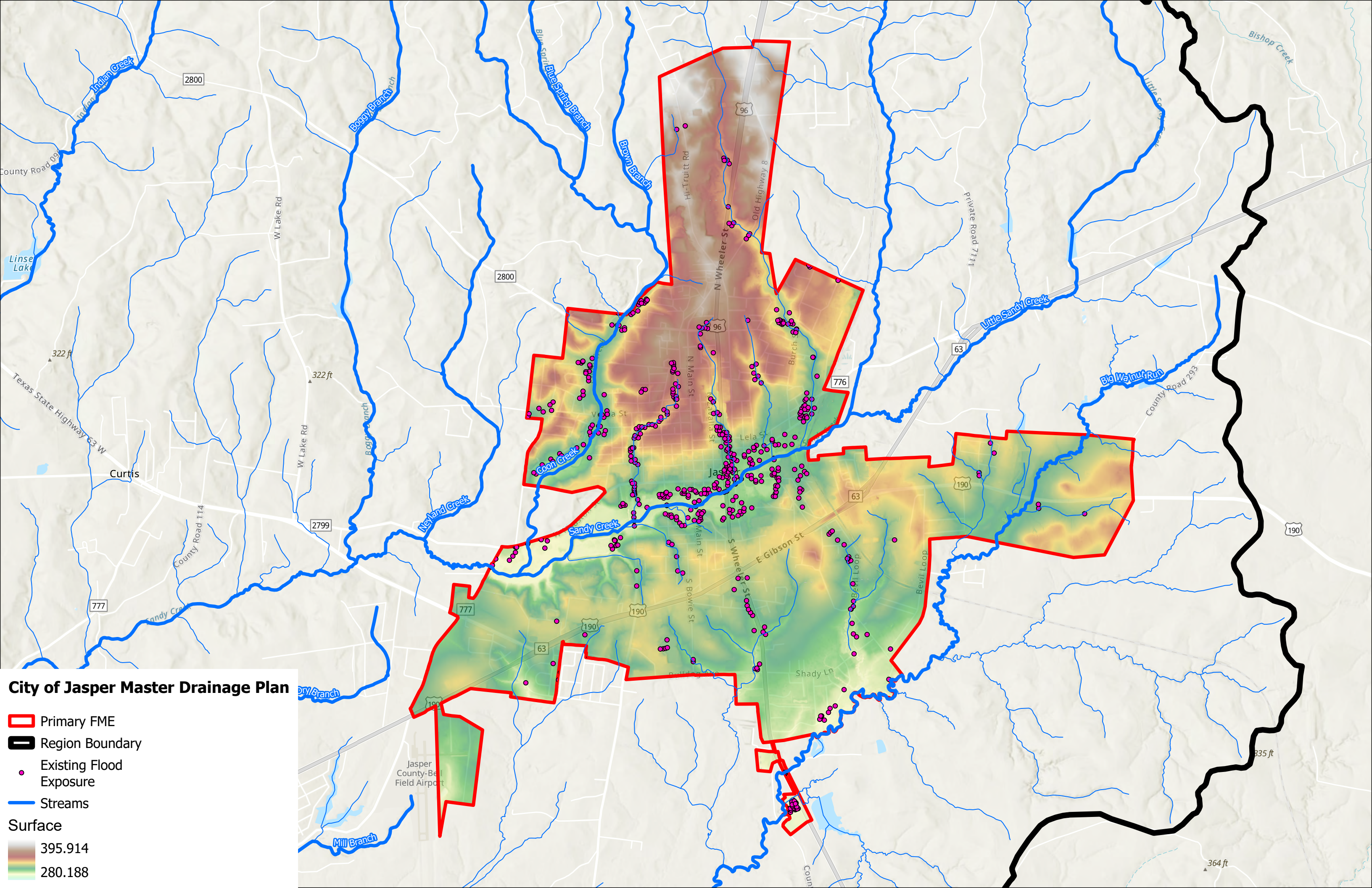


**Main A Channel Improvements**





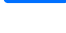

- ▭ Primary FME
- Existing Flood Exposure
- Streams

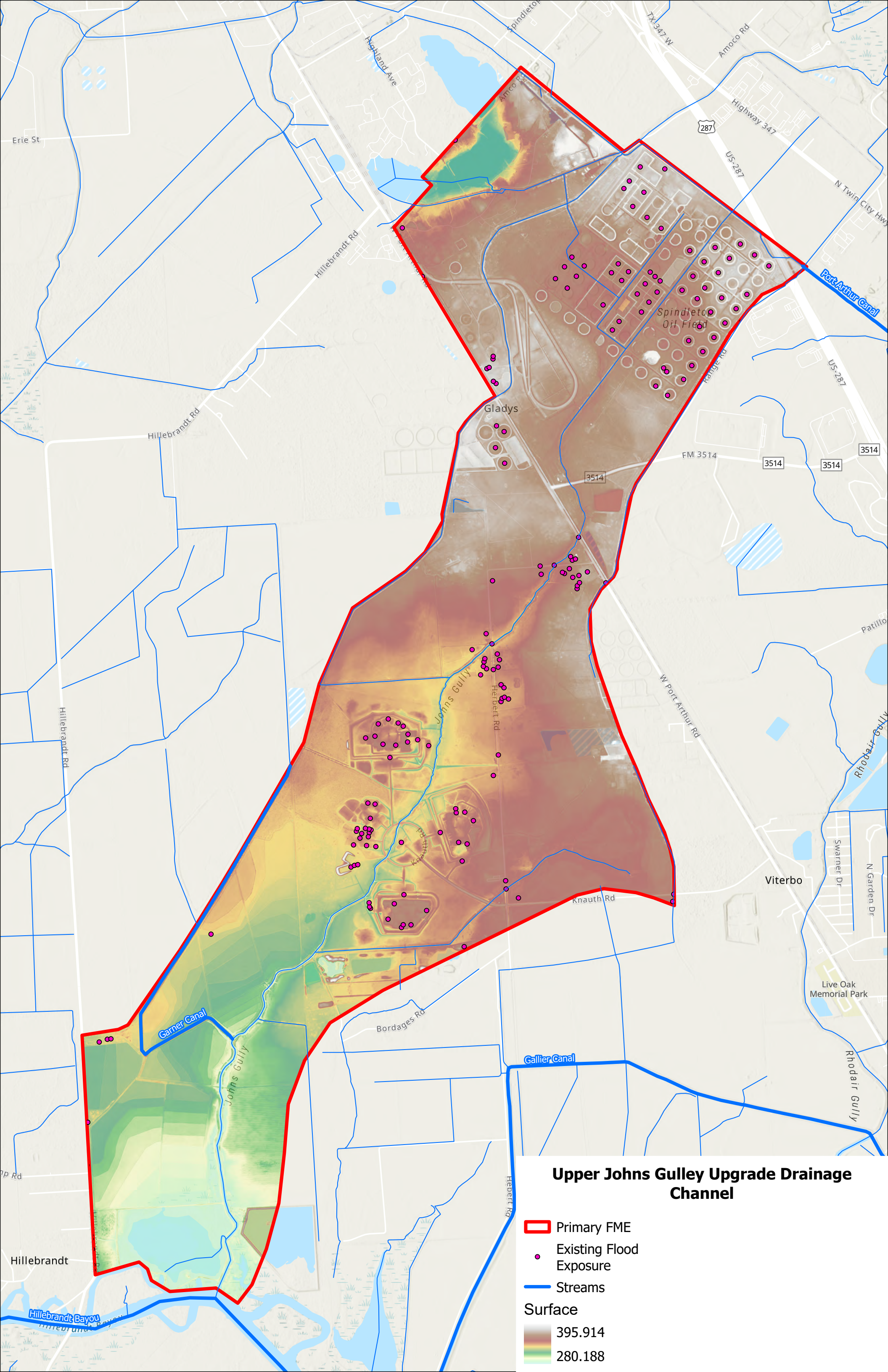
**Surface**

- 395.914
- 280.188








### City of Jasper Master Drainage Plan

-  Primary FME
-  Region Boundary
-  Existing Flood Exposure
-  Streams
- Surface**
-  395.914
-  280.188



### Upper Johns Gully Upgrade Drainage Channel

-  Primary FME
-  Existing Flood Exposure
-  Streams
- Surface**
  -  395.914
  -  280.188