

## Update from Consultant Team


Neches Regional Flood Planning Group

November 17, 2022

1

## Agenda

- Overview of Comments on Draft Regional Flood Plan
  - Public Comments
  - TWDB Comments
- Task 4 – City of Beaumont FMEs
- Task 5 – Recommendation of Newly Identified FMEs
- Task 12 Progress Update



2

## Draft Regional Flood Plan Public Comments

- As of 11/10/2022, **205** Public Comments received
  - Big Thicket National Preserve (154)
  - Texas Parks and Wildlife Department (2)
  - US Army Corps of Engineers (16)
  - General Public (18)
  - National Parks Conservation Association (6)
  - RFPG Members (9)
- Common themes found in comments:
  - Emphasis on preservation of natural resources and floodplains
  - Stronger language on recommendations to ensure floodplain regulation consistency in region
- Initial responses to received comments provided in meeting materials

3

## Draft Regional Flood Plan TWDB Comments

- Comments received October 21, 2022
- Two comment levels:
  - **Level 1** – Directly linked to specific statute, rule or contract requirements, **MUST** be addressed in final Regional Flood Plans
  - **Level 2** – Suggested changes by TWDB to improve plan document
- Initial responses to received comments submitted to TWDB with clarification requested on select few
  - Met with TWDB on November 16<sup>th</sup> to obtain clarification on wording and meaning behind some of the comments provided

4

## TWDB Comments – Level 1 Overview

5

- Directly linked to statute, rule, or contract requirements; must be addressed in final Regional Flood Plan due January 10, 2023.
  - Exhibit C: Technical Guidance for Regional Flood Planning
  - Exhibit D: Data Submittal Guidelines for Regional Flood Planning
- Common themes found in comments:
  - Ensure consistency between text and GIS data
  - Supporting documentation of “no negative impact” for recommended FMPs
    - Models, documentation, or engineering judgement for supporting documentation
  - Examine GIS deliverables to ensure conformance with submittal requirements

5

## TWDB Comments – Level 2 Overview

5

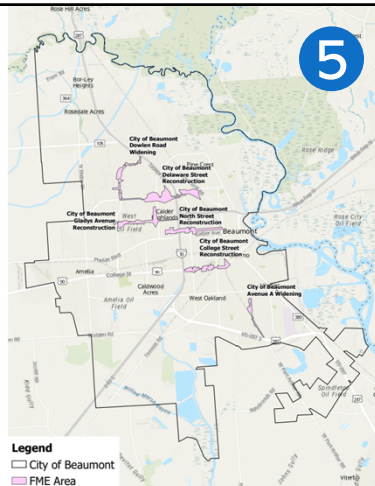
- Suggested changes by TWDB to improve plan document
  - Not strictly required to be addressed by January 10 for the final Regional Flood Plan
- Common themes found in comments:
  - Requests to clarify text and address minor typos found in plan
  - Request to edit GIS Map exhibits to improve legibility and/or conveyance of information
  - Verifying that FMEs do not duplicate work being accomplished by FIF Category 1 and/or will expand upon information collected from BLE and GLO studies

6

## Task 4 – City of Beaumont FMEs

5

- 6 new FMEs provided from City of Beaumont:
  - Avenue A Widening
  - College Street Reconstruction
  - Delaware Street Reconstruction
  - Dowlen Road Widening
  - Gladys Avenue Reconstruction
  - North Street Reconstruction
- All Project Planning FMEs
  - Primarily concerned with evaluating new storm water lines to reduce localized flooding issues



7

## Task 5 - Recommendation of FMEs

5

- Determine if there are any actions on the list of identified FMEs that the RFPG should not support
- Encourage the RFPG to favor inclusion of FMXs understand that there is **no obligation to take action and no financial commitment associated with FMX sponsorship**



FIGURE 5-1: FME SCREENING PROCESS

8

## Task 5 - Recommendation of FMEs

5

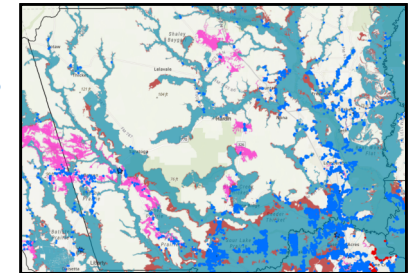
FME Name	FME Type	FME Cost	Sponsor	Structures in 100-YR Floodplain	Structures in Additional Flood Prone Areas
Avenue A Widening	Project Planning	\$25,000	City of Beaumont	0	9
College Street Reconstruction	Project Planning	\$18,750	City of Beaumont	0	24
Delaware Street Reconstruction	Project Planning	\$18,750	City of Beaumont	0	285
Dowlan Road Widening	Project Planning	\$18,750	City of Beaumont	26	18
Gladys Avenue Reconstruction	Project Planning	\$18,750	City of Beaumont	3	113
North Street Reconstruction	Project Planning	\$18,750	City of Beaumont	0	119

9

## Task 12 – Update

5

- To perform, within the RFPG's resources and the time available, a portion of currently recommended FMEs to identify additional FMPs for inclusion in the amended regional flood plan due July 14, 2023
- Evaluate primary projects and turn into FMPs
  - Moderate level of detailed analysis to satisfy TWDB FMP requirements
- Primary FME
  - 7 identified FMEs
- Secondary FME
  - 5 identified FMEs



Hardin County SE Area Drainage System

10

## Task 12 – Primary FMEs

5

FME Name	Description	Sponsor	Cost
Crane Bayou Channel Improvements*	H&H study to identify alternatives for Crane Bayou Channel	Jefferson County Drainage District 7	\$100,000
Main A Channel Improvements*	H&H study to identify alternatives for Main A Channel	Jefferson County Drainage District 7	\$100,000
Upper Johns Gulley Upgrade Drainage Channel*	H&H study to identify alternatives for Upper Johns Gulley drainage improvements	Jefferson County Drainage District 7	\$100,000
Hardin County SE Area Drainage System	H&H study to identify alternatives for developing a large drainage system to drain Lumberton directly into the Neches River, instead of Pine Island Bayou.	Hardin County	\$1,250,000
City of Tyler Master Drainage Plan	Perform H&H modeling to identify and define flood risk, develop conceptual alternatives to reduce flood risk, develop OPCC for conceptual alternatives, and rank projects. Conceptual alternatives should evaluate feasibility of nature based solutions.	City of Tyler	\$2,200,000
Bridge City Drainage Outfall Improvement Project	Improve and extend three major drainage ditches and extend a neighborhood outfall to reduce structural flooding in residences within the area.	City of Bridge City	\$200,000
City of Jasper Master Drainage Plan	Perform H&H modeling to identify and define flood risk, develop conceptual alternatives to reduce flood risk, develop OPCC for conceptual alternatives, and rank projects. Conceptual alternatives should evaluate feasibility of nature based solutions.	City of Jasper	\$440,000

\*Modeling effort to be completed by JCDD7

11

## Task 12 – Secondary FMEs

5

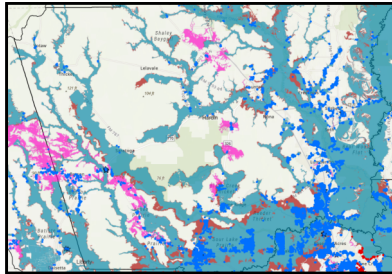
FME Name	Description	Sponsor	Cost
Beauxart Gardens Central Ditch Improvements	Evaluate project to quantify benefits, evaluate impacts, and begin design. Project consists of widening those channels to increase the runoff capacity – upgrading/enlarging road crossings to reduce out of bank flooding.	Jefferson County Drainage District 7	\$50,000
City of Vidor Schoolhouse Ditch Alternative B	H&H study to identify alternatives for Schoolhouse Ditch	City of Vidor	\$100,000
City of Vidor Schoolhouse Ditch Alternative C	H&H study to identify alternatives for Schoolhouse Ditch	City of Vidor	\$100,000
City of Nacogdoches Flood Mitigation Project	H&H study to mitigate the wide-spread flooding that occurs along LaNana and Banita Creeks in the City of Nacogdoches	City of Nacogdoches	\$100,000
Liberty County Recanalization Feasibility Study	Evaluate project to quantify benefits, evaluate impacts, and begin design. Project consists of dechannelizing existing feeder creeks that flow from north to south and improve drainage for storm water runoff.	Liberty County	\$130,000

12

## Task 12 – Update

5

- Hardin County SE Area Drainage System
  - Coordination meeting with JCDD6 (FIF Study) and Hardin County on September 27<sup>th</sup>, 2022
  - Whiteley Oliver Engineering LLC selected by Hardin County for CDBG-MIT Engineering Services
  - Area being evaluated in FIF Study to quantify water surface elevation reduction
  - Additional coordination ongoing

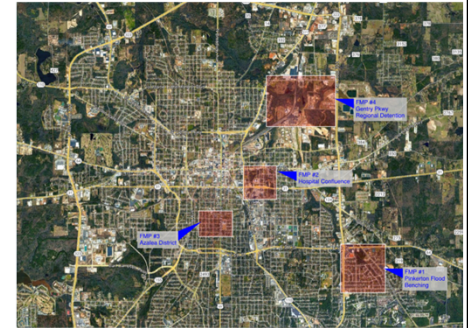


13

## Task 12 – Update

5

- City of Tyler MDP – Black Fork Creek
  - Met with City on November 3, 2022 to discuss preferred locations for FMPs
  - 4 potential FMP locations identified
    - Pinkerton Flood Benching
    - Hospital Confluence
    - Azalea District
    - Gentry Pkwy Regional Detention
  - Additional meeting scheduled with City early December to select FMP to evaluate

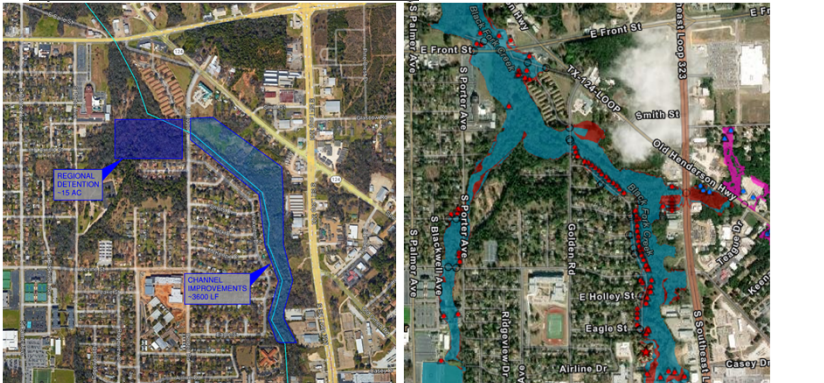


14

## Task 12 – Update

5

- Option 1: Pinkerton Flood Benching

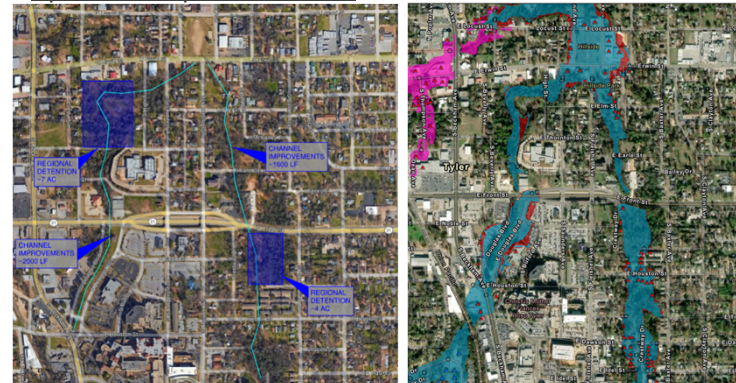


15

## Task 12 – Update

5

- Option 2: Hospital Confluence



16

## Task 12 – Update

5

- Option 3: Azalea District

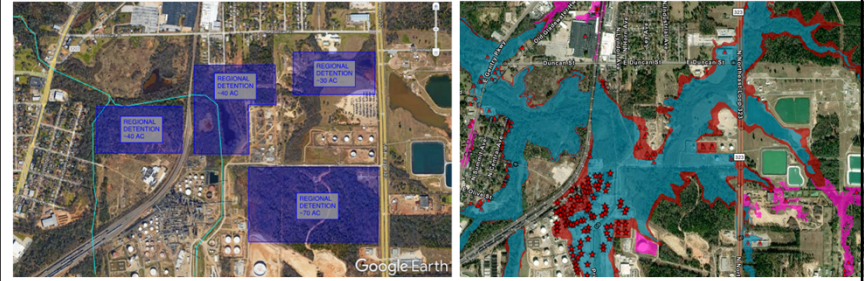


17

## Task 12 – Update

5

- Option 4: Gentry Pkwy Regional Detention



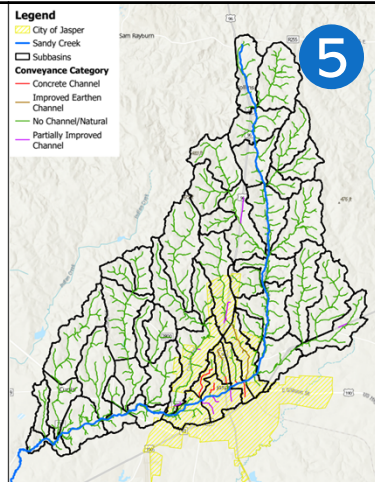
18

## Task 12 – Update

5

### City of Jasper MDP – Sandy Creek Evaluation

- Hydrology
  - Completed Tasks
    - Delineated Subbasins, Conveyance lines, and Land Use for the study area
  - Upcoming Tasks
    - Channel slopes, Hydrologic Parameters, HMS model
  - Timeline
    - Late January 2023
- Hydraulics
  - Timeline
    - Late February 2023



19

## Proposed Budget Adjustments

5

Task	Current	Proposed	Change	Percent Change
1 – Planning Area Description	\$57,445.00	\$57,399.75	-\$45.25	-0.08%
2A – Existing Flood Risk	\$114,890.00	\$140,886.84	\$25,996.84	22.63%
2B – Future Flood Risk	\$114,890.00	\$132,300.52	\$17,410.52	15.15%
3A – Recommendations on Floodplain Management Practices	\$22,978.00	\$22,856.28	-\$121.72	-0.53%
3B – Flood Mitigations & Management Goals	\$11,489.00	\$10,546.04	-\$942.96	-8.21%
4A – Flood Mitigation Needs Analysis	\$34,467.00	\$33,605.42	-\$861.58	-2.50%
4B – Identify & Evaluate Potential FMEs, FMSs, FMPs	\$172,335.00	\$167,566.14	-\$4,768.86	-2.77%
4C – Submit Technical Memorandum	\$22,978.00	\$29,990.44	\$7,012.44	30.52%
5 – Recommendation of FMEs, FMSs, FMPs	\$229,780.00	\$162,129.23	-\$67,650.77	-29.44%
6A – Impacts of Regional Flood Plan	\$45,956.00	\$41,404.32	-\$4,551.68	-9.90%
6B – Contributions to & impacts on Water Supply	\$11,489.00	\$7,467.85	-\$4,021.15	-35.00%
7 – Flood Response Information and Activities	\$11,489.00	\$11,998.30	\$509.30	4.43%
8 – Administrative, Regulatory, and Legislative Recommendations	\$11,489.00	\$11,392.65	-\$96.35	-0.84%
9 – Flood Infrastructure Financing Analysis	\$22,978.00	\$21,922.69	-\$1,055.31	-4.59%
10 – Adoption of Plan and Public Participation	\$195,347.00	\$228,533.53	\$33,186.53	16.99%
11 – Additional Outreach	\$96,465.00	\$96,465.00	\$0.00	0.00%
12 – Perform Identified FMEs, Identify, Evaluate, Recommend Additional FMPs	\$385,860.00	\$385,860.00	\$0.00	0.00%
12 – Prepare and Adopt Amended RFP	\$160,775.00	\$160,775.00	\$0.00	0.00%

20

